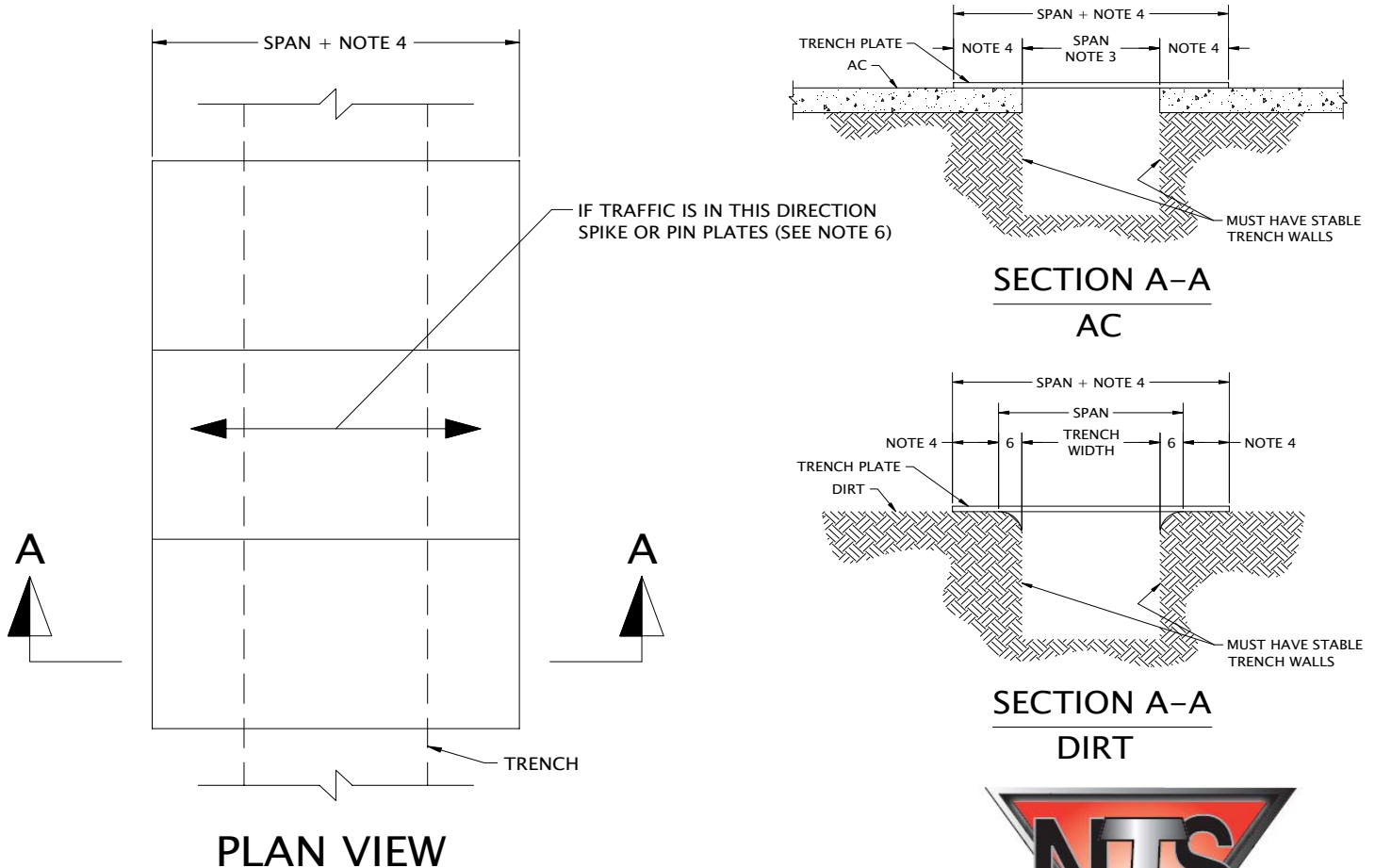


# NTS Steel Crossing Plates Tabulated Data

## HS-20-44 LOADING

PLATE THICKNESS (IN)	MAX. ALLOW. SPAN (FT)	PLATE SIZE (FT x FT) / WEIGHT (LB)							
		5' X 8'	5' X 10'	6' X 10'	8' X 10'	8' X 12'	8' X 15'	8' X 16'	8' X 20'
1"	4' - 6"	1634#	2042#	2450#	3267#	3920#	4901#	5227#	6534#
1 1/4"	7' - 0"	2042#	2552#	3063#	4084#	4901#	6126#	6534#	8168#
1 1/2"	10' - 0"	2450#	3063#	3675#	4901#	5881#	7351#	7841#	9801#



**NOTES:**

- 1.) PLATES ARE ASTM A36 MIN. STEEL,  $F_y$  - 36 KSI.
- 2.) PLATES ARE DESIGNED FOR HS20-44 LOADING ONLY, AND SHALL NOT BE ACCESSED BY CONSTRUCTION EQUIP. EXCEEDING HS20-44 LOADING LIMITS.
- 3.) THE SPAN IS FROM ASPHALT EDGE TO ASPHALT EDGE OR TRENCH WIDTH + 12".
- 4.) EDGE OVERLAP SHALL BE OBTAINED ON ALL EDGES OF EXCAVATION, AS FOLLOW
  - TRAFFIC SPEED LESS THAN 45 MPH: 18" MINIMUM
  - TRAFFIC SPEED OVER 45 MPH: 24" MINIMUM
- 5.) CHART IS BASED ON STABLE OR SHORED TRENCH, AS CONFIRMED BY BY CONTRACTOR'S COMPETENT PERSON OR ENGINEER. ANY TRENCHES IN C SOILS MUST BE FULLY SHORED OR APPROVED BY PROFESSIONAL ENGINEER.
- 6.) IF TRAFFIC IS PERPENDICULAR TO TRENCH AND IF SPEED EXCEEDS 25 MPH. PLATES MUST BE SECURED BY CONTRACTOR, TO PREVENT MOVEMENT.
- 7.) USE COLD PATCH ASPHALT ALONG ALL EDGES OF STEEL PLATE TO ENSURE SMOOTH TRANSITION FOR TRAFFIC.
- 8.) CONTRACTOR'S COMPETENT PERSON IS RESPONSIBLE FOR USE OF THIS TABULATED DATA WITHIN LIMITS, AND ENSURING SAFE CONDITIONS FOR TRAFFIC AT ALL TIMES



*"The Trench Safety Specialists"*  
 15955 W. HARDY ROAD, SUITE 100  
 HOUSTON, TX. 77060  
 TOLL FREE: (800) 234-9244  
 FAX: (832) 200-0989  
[WWW.NTSAFETY.COM](http://WWW.NTSAFETY.COM)